

DEPT. 55 - BEEF FEEDERS

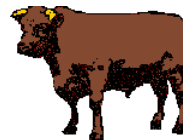
Check in: Monday, August 1, 7 a.m. - 8 p.m.

Weigh in: Tue., August 2, following steers

Show: Fri., Aug. 5, following Beef Breeding

Place: Beef Complex

Committee Chair: Tom Richey



2011 Fairbook changes are in Italic

TROPHY/AWARDS & 2010 DONORS

Grand Champion Beef Feeder	Sugarcreek Livestock Auction, Leroy Baker
Reserve Champion Beef Feeder	Brady Baker Livestock Hauling
Junior Beef Showmanship	Lynnelle Thompson
Interm. Beef Showmanship	M & M Construction
Senior Beef Showmanship	Todd's Envirosapes, Inc.
Beef Showman of Showmen	Winona Ruritan

Rules - All species will conform to all Uniform Junior Fair Rules found on pages 6-9 of this handbook. Please read these rules:

1. Beef Feeder calf must be born on or after Jan 1, 2011.
2. You may sell beef feeders at the Saturday Jr. Fair Sale. Attending Quality Assurance is Required. If you wish to sell your beef feeder it will be tagged in at the fair. All beef feeders must be registered by July 1, 2011 with form in back of book.
3. Only one animal per exhibitor.
4. A copy of a health certificate must be presented and given to a committee member before the animal is unloaded.
- 5. Calves must have testicles and horns REMOVED by June 5.**
6. Unruly or unmanageable animals may not be exhibited.
7. All animals shall be a recognized beef breed.
8. All animals may be steers or heifers.
- 9. Calf must be in the exhibitors POSSESSION and REGISTERED by June 5.**
10. All exhibitors will secure their animal with a halter and rope-type neck lead.
11. The exhibitor will be responsible for cleaning, bedding, watering, feeding, barn duty, and grooming their animal for the entire fair.
12. No separate pens, stalls or dividers will be placed or built in the exhibit area without consent of the 4-H/Jr. Fair Beef Feeder Committee.
13. The 4-H/Jr. Fair Beef Feeder Committee reserves the right to amend a rule it feels necessary to benefit the participants.
14. Non-adherence of any of these rules may result in disqualification and removal of the animal from the fairgrounds.
15. Beef Feeder grooming rules follow the same rules as steers.
16. All calves must be kept in *Beef Complex*.
17. Exhibitors must attend two (2) clinics to show at the fair.
See Uniform Showmanship rules and classes.